

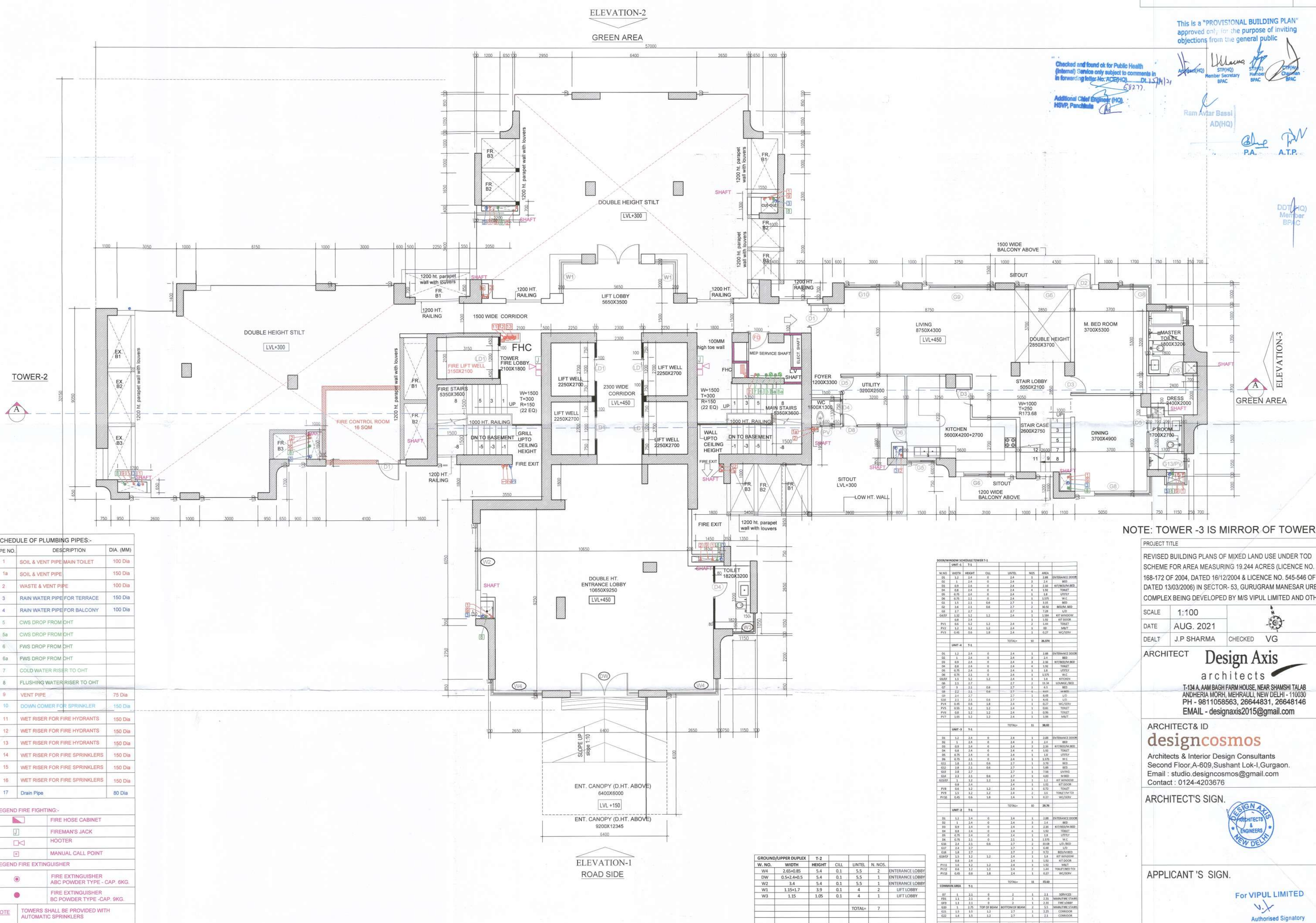
This is a "PROVISIONAL BUILDING PLAN" approved only for the purpose of inviting objections from the general public

Checked and found ok for Public Health (Internal) Service only subject to comments in forwarding letter No. ACEHQ/.....DL.L.S/H/1/.....6/27/77.

Additional Chief Engineer (HQ) HSNP, Panchnala

Ram Avtar Bassi AD(HQ)

Blue P.A. A.T.P.



**SCHEDULE OF PLUMBING PIPES-**

PIPE NO.	DESCRIPTION	DIA. (MM)
1	SOIL & VENT PIPE MAIN TOILET	100 Dia
1a	SOIL & VENT PIPE	150 Dia
2	WASTE & VENT PIPE	100 Dia
3	RAIN WATER PIPE FOR TERRACE	150 Dia
4	RAIN WATER PIPE FOR BALCONY	100 Dia
5	CWS DROP FROM OHT	
5a	CWS DROP FROM OHT	
6	FWS DROP FROM OHT	
6a	FWS DROP FROM OHT	
7	COLD WATER RISER TO OHT	
8	FLUSHING WATER RISER TO OHT	
9	VENT PIPE	75 Dia
10	DOWN COMER FOR SPRINKLER	150 Dia
11	WET RISER FOR FIRE HYDRANTS	150 Dia
12	WET RISER FOR FIRE HYDRANTS	150 Dia
13	WET RISER FOR FIRE HYDRANTS	150 Dia
14	WET RISER FOR FIRE SPRINKLERS	150 Dia
15	WET RISER FOR FIRE SPRINKLERS	150 Dia
16	WET RISER FOR FIRE SPRINKLERS	150 Dia
17	Drain Pipe	80 Dia

**LEGEND FIRE FIGHTING-**

- FIRE HOSE CABINET
- FIREMAN'S JACK
- HOOTER
- MANUAL CALL POINT

**LEGEND FIRE EXTINGUISHER**

- FIRE EXTINGUISHER ABC POWDER TYPE - CAP. 9KG.
- FIRE EXTINGUISHER BC POWDER TYPE - CAP. 9KG.

**NOTE** TOWERS SHALL BE PROVIDED WITH AUTOMATIC SPRINKLERS

**ROOM/WINDOW SCHEDULE TOWER-1**

UNIT	W. NO.	WIDTH	HEIGHT	CILL	LINTEL	NOS.	AREA	REMARKS
<b>UNIT-1</b>								
01	1.2	2.4	0	2.4	1	2.88	ENTRANCE DOOR	
02	1	2.4	0	2.4	2	2.4	BED	
03	0.9	2.4	0	2.4	2	2.16	KITCHEN/BED	
04	0.9	2.4	0	2.4	4	1.92	TOILET	
05	0.75	2.4	0	2.4	1	1.8	LITTRY	
06	0.75	2.4	0	2.4	1	1.8	LITTRY	
07	1.2	2.1	0.6	2.7	1	3.15	BED	
08	1.2	2.1	0.6	2.7	1	3.15	BED	
09	1.2	2.1	0.6	2.7	1	3.15	BED	
10	1.2	2.1	0.6	2.7	1	3.15	BED	
11	1.2	2.1	0.6	2.7	1	3.15	BED	
12	1.2	2.1	0.6	2.7	1	3.15	BED	
13	1.2	2.1	0.6	2.7	1	3.15	BED	
14	1.2	2.1	0.6	2.7	1	3.15	BED	
15	1.2	2.1	0.6	2.7	1	3.15	BED	
16	1.2	2.1	0.6	2.7	1	3.15	BED	
17	1.2	2.1	0.6	2.7	1	3.15	BED	
18	1.2	2.1	0.6	2.7	1	3.15	BED	
19	1.2	2.1	0.6	2.7	1	3.15	BED	
20	1.2	2.1	0.6	2.7	1	3.15	BED	
21	1.2	2.1	0.6	2.7	1	3.15	BED	
22	1.2	2.1	0.6	2.7	1	3.15	BED	
23	1.2	2.1	0.6	2.7	1	3.15	BED	
24	1.2	2.1	0.6	2.7	1	3.15	BED	
25	1.2	2.1	0.6	2.7	1	3.15	BED	
26	1.2	2.1	0.6	2.7	1	3.15	BED	
27	1.2	2.1	0.6	2.7	1	3.15	BED	
28	1.2	2.1	0.6	2.7	1	3.15	BED	
29	1.2	2.1	0.6	2.7	1	3.15	BED	
30	1.2	2.1	0.6	2.7	1	3.15	BED	
31	1.2	2.1	0.6	2.7	1	3.15	BED	
32	1.2	2.1	0.6	2.7	1	3.15	BED	
33	1.2	2.1	0.6	2.7	1	3.15	BED	
34	1.2	2.1	0.6	2.7	1	3.15	BED	
35	1.2	2.1	0.6	2.7	1	3.15	BED	
36	1.2	2.1	0.6	2.7	1	3.15	BED	
37	1.2	2.1	0.6	2.7	1	3.15	BED	
38	1.2	2.1	0.6	2.7	1	3.15	BED	
39	1.2	2.1	0.6	2.7	1	3.15	BED	
40	1.2	2.1	0.6	2.7	1	3.15	BED	
41	1.2	2.1	0.6	2.7	1	3.15	BED	
42	1.2	2.1	0.6	2.7	1	3.15	BED	
43	1.2	2.1	0.6	2.7	1	3.15	BED	
44	1.2	2.1	0.6	2.7	1	3.15	BED	
45	1.2	2.1	0.6	2.7	1	3.15	BED	
46	1.2	2.1	0.6	2.7	1	3.15	BED	
47	1.2	2.1	0.6	2.7	1	3.15	BED	
48	1.2	2.1	0.6	2.7	1	3.15	BED	
49	1.2	2.1	0.6	2.7	1	3.15	BED	
50	1.2	2.1	0.6	2.7	1	3.15	BED	
51	1.2	2.1	0.6	2.7	1	3.15	BED	
52	1.2	2.1	0.6	2.7	1	3.15	BED	
53	1.2	2.1	0.6	2.7	1	3.15	BED	
54	1.2	2.1	0.6	2.7	1	3.15	BED	
55	1.2	2.1	0.6	2.7	1	3.15	BED	
56	1.2	2.1	0.6	2.7	1	3.15	BED	
57	1.2	2.1	0.6	2.7	1	3.15	BED	
58	1.2	2.1	0.6	2.7	1	3.15	BED	
59	1.2	2.1	0.6	2.7	1	3.15	BED	
60	1.2	2.1	0.6	2.7	1	3.15	BED	
61	1.2	2.1	0.6	2.7	1	3.15	BED	
62	1.2	2.1	0.6	2.7	1	3.15	BED	
63	1.2	2.1	0.6	2.7	1	3.15	BED	
64	1.2	2.1	0.6	2.7	1	3.15	BED	
65	1.2	2.1	0.6	2.7	1	3.15	BED	
66	1.2	2.1	0.6	2.7	1	3.15	BED	
67	1.2	2.1	0.6	2.7	1	3.15	BED	
68	1.2	2.1	0.6	2.7	1	3.15	BED	
69	1.2	2.1	0.6	2.7	1	3.15	BED	
70	1.2	2.1	0.6	2.7	1	3.15	BED	
71	1.2	2.1	0.6	2.7	1	3.15	BED	
72	1.2	2.1	0.6	2.7	1	3.15	BED	
73	1.2	2.1	0.6	2.7	1	3.15	BED	
74	1.2	2.1	0.6	2.7	1	3.15	BED	
75	1.2	2.1	0.6	2.7	1	3.15	BED	
76	1.2	2.1	0.6	2.7	1	3.15	BED	
77	1.2	2.1	0.6	2.7	1	3.15	BED	
78	1.2	2.1	0.6	2.7	1	3.15	BED	
79	1.2	2.1	0.6	2.7	1	3.15	BED	
80	1.2	2.1	0.6	2.7	1	3.15	BED	
81	1.2	2.1	0.6	2.7	1	3.15	BED	
82	1.2	2.1	0.6	2.7	1	3.15	BED	
83	1.2	2.1	0.6	2.7	1	3.15	BED	
84	1.2	2.1	0.6	2.7	1	3.15	BED	
85	1.2	2.1	0.6	2.7	1	3.15	BED	
86	1.2	2.1	0.6	2.7	1	3.15	BED	
87	1.2	2.1	0.6	2.7	1	3.15	BED	
88	1.2	2.1	0.6	2.7	1	3.15	BED	
89	1.2	2.1	0.6	2.7	1	3.15	BED	
90	1.2	2.1	0.6	2.7	1	3.15	BED	
91	1.2	2.1	0.6	2.7	1	3.15	BED	
92	1.2	2.1	0.6	2.7	1	3.15	BED	
93	1.2	2.1	0.6	2.7	1	3.15	BED	
94	1.2	2.1	0.6	2.7	1	3.15	BED	
95	1.2	2.1	0.6	2.7	1	3.15	BED	
96	1.2	2.1	0.6	2.7	1	3.15	BED	
97	1.2	2.1	0.6	2.7	1	3.15	BED	
98	1.2	2.1	0.6	2.7	1	3.15	BED	
99	1.2	2.1	0.6	2.7	1	3.15	BED	
100	1.2	2.1	0.6	2.7	1	3.15	BED	
101	1.2	2.1	0.6	2.7	1	3.15	BED	
102	1.2	2.1	0.6	2.7	1	3.15	BED	
103	1.2	2.1	0.6	2.7	1	3.15	BED	
104	1.2	2.1	0.6	2.7	1	3.15	BED	
105	1.2	2.1	0.6	2.7	1	3.15	BED	
106	1.2	2.1	0.6	2.7	1	3.15	BED	
107	1.2	2.1	0.6	2.7	1	3.15	BED	
108	1.2	2.1	0.6	2.7	1	3.15	BED	
109	1.2	2.1	0.6	2.7	1	3.15	BED	
110	1.2	2.1	0.6	2.7	1	3.15	BED	
111	1.2	2.1	0.6	2.7	1	3.15	BED	
112	1.2	2.1	0.6	2.7	1	3.15	BED	
113	1.2	2.1	0.6	2.7	1	3.15	BED	
114	1.2	2.1	0.6	2.7	1	3.15	BED	
115	1.2	2.1	0.6	2.7	1	3.15	BED	
116	1.2	2.1	0.6	2.7	1	3.15	BED	
117	1.2	2.1	0.6	2.7	1	3.15	BED	
118	1.2	2.1	0.6	2.7	1	3.15	BED	
119	1.2	2.1	0.6	2.7	1	3.15	BED	
120	1.2	2.1	0.6	2.7	1	3.15	BED	
121	1.2	2.1	0.6	2.7	1	3.15	BED	
122	1.2	2.1	0.6	2.7	1	3.15	BED	
123	1.2	2.1	0.6	2.7	1	3.15	BED	
124	1.2	2.1	0.6	2.7	1	3.15	BED	
125	1.2	2.1	0.6	2.7	1	3.15	BED	
126	1.2	2.1	0.6	2.7	1	3.15	BED	
127	1.2	2.1	0.6	2.7	1	3.15	BED	
128	1.2	2.1	0.6	2.7	1	3.15	BED	
129	1.2	2.1	0.6	2.7	1	3.15	BED	
130	1.2	2.1	0.6	2.7	1	3.15	BED	
131	1.2	2.1	0.6	2.7	1	3.15	BED	
132	1.2	2.1	0.6	2.7	1	3.15	BED	
133	1.2	2.1	0.6	2.7	1	3.15	BED	
134	1.2	2.1	0.6	2.7	1	3.15	BED	
135	1.2	2.1	0.6	2.7	1	3.15	BED	
136	1.2	2.1	0.6	2.7	1	3.15	BED	
137	1.2	2.1	0.6	2.7	1	3.15	BED	
138	1.2	2.1	0.6	2.7	1	3.15	BED	
139	1.2	2.1	0.6	2.7	1	3.15	BED	
140	1.2	2.1	0.6	2.7	1	3.15	BED	
141	1.2	2.1	0.6	2.7	1	3.15	BED	
142	1.2	2.1	0.6	2.7	1	3.15	BED	
143	1.2	2.1	0.6	2.7	1	3.15	BED	
144	1.2	2.1	0.6	2.7	1	3.15	BED	
145	1.2	2.1	0.6	2.7	1	3.15	BED	
146	1.2	2.1	0.6	2.7	1	3.15	BED	
147	1.2	2.1	0.6	2.7	1	3.15	BED	
148	1.2	2.1	0.6	2.7	1	3.15	BED	
149	1.2	2.1	0.6	2.7	1	3.15	BED	
150	1.2	2.1	0.6	2.7	1	3.15	BED	
151	1.2	2.1	0.6	2.7	1	3.15	BED	
152	1.2	2.1	0.6	2.7	1	3.15	BED	
153	1.2	2.1	0.6	2.7	1	3.15	BED	
154	1.2	2.1	0.6	2.7	1	3.15	BED	
155	1.2	2.1	0.6	2.7	1	3.15	BED	
156	1.2	2.1	0.6	2.7	1	3.15	BED	
157	1.2	2.1	0.6	2.7	1	3.15	BED	
158	1.2							