

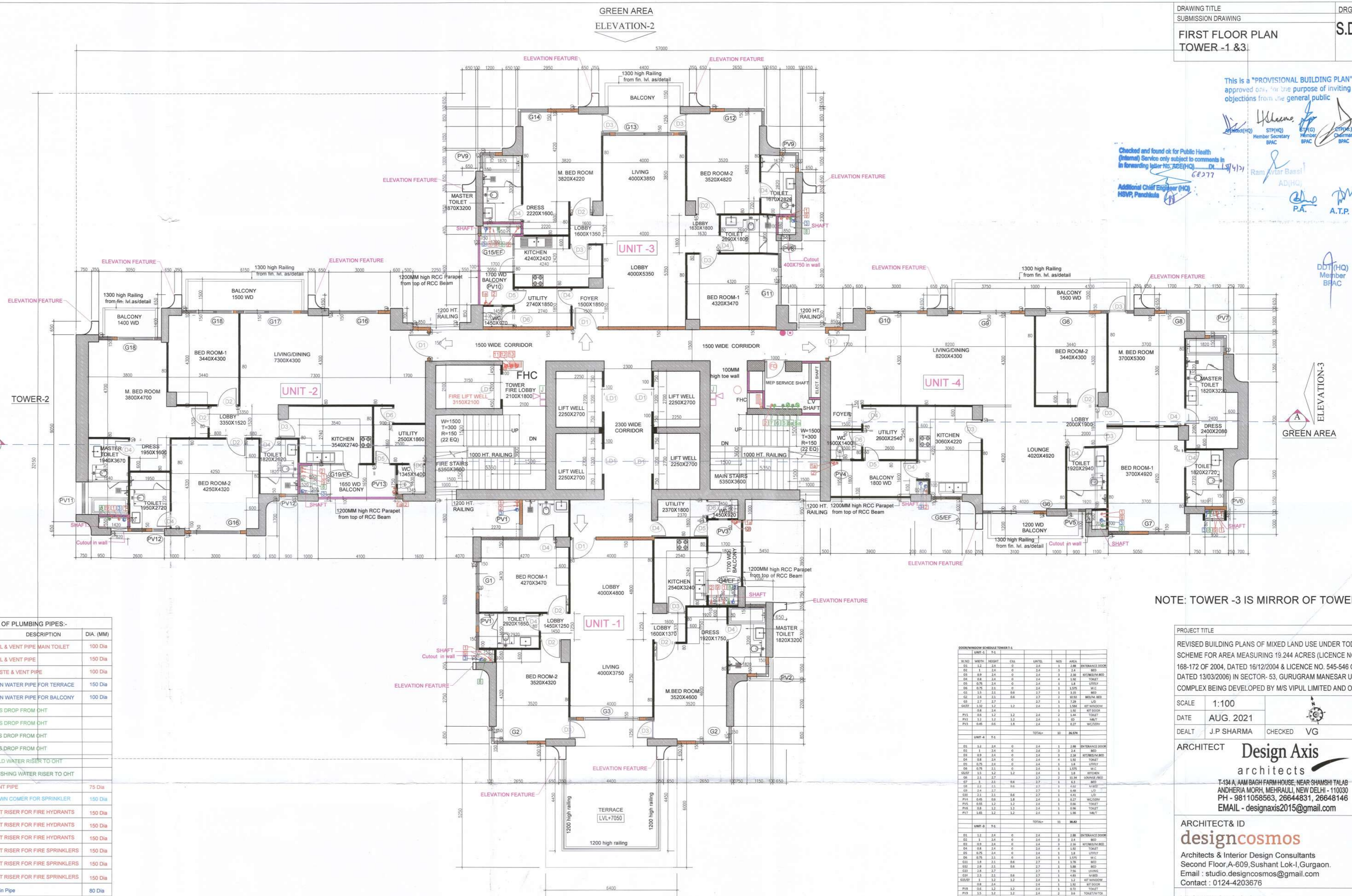
This is a "PROVISIONAL BUILDING PLAN" approved only for the purpose of inviting objections from the general public

Checked and found ok for Public Health (Internal) Service only subject to comments in forwarding letter No. 22E(HQ) DT-11/17/21
6.8.277

Additional Chief Engineer (HQ) HSNP, Panaji

Member Secretary BPC
Member Secretary BPC
Chairman BPC
AD(HQ)
P.A.
A.T.P.

DDT(HQ) Member BFAC



NOTE: TOWER -3 IS MIRROR OF TOWER -1

SCHEDULE OF PLUMBING PIPES:-

PIPE NO.	DESCRIPTION	DIA. (MM)
1	SOIL & VENT PIPE MAIN TOILET	100 Dia
1a	SOIL & VENT PIPE	150 Dia
2	WASTE & VENT PIPE	100 Dia
3	RAIN WATER PIPE FOR TERRACE	150 Dia
4	RAIN WATER PIPE FOR BALCONY	100 Dia
5	CWS DROP FROM OHT	
5a	CWS DROP FROM OHT	
6	FWS DROP FROM OHT	
6a	FWS DROP FROM OHT	
7	COLD WATER RISER TO OHT	
8	FLUSHING WATER RISER TO OHT	
9	VENT PIPE	75 Dia
10	DOWN COMER FOR SPRINKLER	150 Dia
11	WET RISER FOR FIRE HYDRANTS	150 Dia
12	WET RISER FOR FIRE HYDRANTS	150 Dia
13	WET RISER FOR FIRE HYDRANTS	150 Dia
14	WET RISER FOR FIRE SPRINKLERS	150 Dia
15	WET RISER FOR FIRE SPRINKLERS	150 Dia
16	WET RISER FOR FIRE SPRINKLERS	150 Dia
17	Drain Pipe	80 Dia

LEGEND FIRE FIGHTING:-

- FIRE HOSE CABINET
- FIREMAN'S JACK
- HOOTER
- MANUAL CALL POINT

LEGEND FIRE EXTINGUISHER

- FIRE EXTINGUISHER ABC POWDER TYPE - CAP. 8KG.
- FIRE EXTINGUISHER BC POWDER TYPE - CAP. 8KG.

NOTE TOWERS SHALL BE PROVIDED WITH AUTOMATIC SPRINKLERS

DOOR/WINDOW SCHEDULE TOWER-1

W.NO.	WIDTH	HEIGHT	COL.	UNIT	NO.	AREA	REMARKS
DL 1.1	2.4	0	2.4	1	2.88	ENTRANCE DOOR	
DL 1.2	2.4	0	2.4	1	2.4	BED	
DL 1.3	2.4	0	2.4	1	2.4	BED	
DL 1.4	2.4	0	2.4	1	2.4	BED	
DL 1.5	2.4	0	2.4	1	2.4	ENTRANCE DOOR	
DL 1.6	2.4	0	2.4	1	2.4	ENTRANCE DOOR	
DL 1.7	2.4	0	2.4	1	2.4	ENTRANCE DOOR	
DL 1.8	2.4	0	2.4	1	2.4	ENTRANCE DOOR	
DL 1.9	2.4	0	2.4	1	2.4	ENTRANCE DOOR	
DL 1.10	2.4	0	2.4	1	2.4	ENTRANCE DOOR	
DL 1.11	2.4	0	2.4	1	2.4	ENTRANCE DOOR	
DL 1.12	2.4	0	2.4	1	2.4	ENTRANCE DOOR	
DL 1.13	2.4	0	2.4	1	2.4	ENTRANCE DOOR	
DL 1.14	2.4	0	2.4	1	2.4	ENTRANCE DOOR	
DL 1.15	2.4	0	2.4	1	2.4	ENTRANCE DOOR	
DL 1.16	2.4	0	2.4	1	2.4	ENTRANCE DOOR	
DL 1.17	2.4	0	2.4	1	2.4	ENTRANCE DOOR	
DL 1.18	2.4	0	2.4	1	2.4	ENTRANCE DOOR	
DL 1.19	2.4	0	2.4	1	2.4	ENTRANCE DOOR	
DL 1.20	2.4	0	2.4	1	2.4	ENTRANCE DOOR	
DL 1.21	2.4	0	2.4	1	2.4	ENTRANCE DOOR	
DL 1.22	2.4	0	2.4	1	2.4	ENTRANCE DOOR	
DL 1.23	2.4	0	2.4	1	2.4	ENTRANCE DOOR	
DL 1.24	2.4	0	2.4	1	2.4	ENTRANCE DOOR	
DL 1.25	2.4	0	2.4	1	2.4	ENTRANCE DOOR	
DL 1.26	2.4	0	2.4	1	2.4	ENTRANCE DOOR	
DL 1.27	2.4	0	2.4	1	2.4	ENTRANCE DOOR	
DL 1.28	2.4	0	2.4	1	2.4	ENTRANCE DOOR	
DL 1.29	2.4	0	2.4	1	2.4	ENTRANCE DOOR	
DL 1.30	2.4	0	2.4	1	2.4	ENTRANCE DOOR	
DL 1.31	2.4	0	2.4	1	2.4	ENTRANCE DOOR	
DL 1.32	2.4	0	2.4	1	2.4	ENTRANCE DOOR	
DL 1.33	2.4	0	2.4	1	2.4	ENTRANCE DOOR	
DL 1.34	2.4	0	2.4	1	2.4	ENTRANCE DOOR	
DL 1.35	2.4	0	2.4	1	2.4	ENTRANCE DOOR	
DL 1.36	2.4	0	2.4	1	2.4	ENTRANCE DOOR	
DL 1.37	2.4	0	2.4	1	2.4	ENTRANCE DOOR	
DL 1.38	2.4	0	2.4	1	2.4	ENTRANCE DOOR	
DL 1.39	2.4	0	2.4	1	2.4	ENTRANCE DOOR	
DL 1.40	2.4	0	2.4	1	2.4	ENTRANCE DOOR	
DL 1.41	2.4	0	2.4	1	2.4	ENTRANCE DOOR	
DL 1.42	2.4	0	2.4	1	2.4	ENTRANCE DOOR	
DL 1.43	2.4	0	2.4	1	2.4	ENTRANCE DOOR	
DL 1.44	2.4	0	2.4	1	2.4	ENTRANCE DOOR	
DL 1.45	2.4	0	2.4	1	2.4	ENTRANCE DOOR	
DL 1.46	2.4	0	2.4	1	2.4	ENTRANCE DOOR	
DL 1.47	2.4	0	2.4	1	2.4	ENTRANCE DOOR	
DL 1.48	2.4	0	2.4	1	2.4	ENTRANCE DOOR	
DL 1.49	2.4	0	2.4	1	2.4	ENTRANCE DOOR	
DL 1.50	2.4	0	2.4	1	2.4	ENTRANCE DOOR	
DL 1.51	2.4	0	2.4	1	2.4	ENTRANCE DOOR	
DL 1.52	2.4	0	2.4	1	2.4	ENTRANCE DOOR	
DL 1.53	2.4	0	2.4	1	2.4	ENTRANCE DOOR	
DL 1.54	2.4	0	2.4	1	2.4	ENTRANCE DOOR	
DL 1.55	2.4	0	2.4	1	2.4	ENTRANCE DOOR	
DL 1.56	2.4	0	2.4	1	2.4	ENTRANCE DOOR	
DL 1.57	2.4	0	2.4	1	2.4	ENTRANCE DOOR	
DL 1.58	2.4	0	2.4	1	2.4	ENTRANCE DOOR	
DL 1.59	2.4	0	2.4	1	2.4	ENTRANCE DOOR	
DL 1.60	2.4	0	2.4	1	2.4	ENTRANCE DOOR	
DL 1.61	2.4	0	2.4	1	2.4	ENTRANCE DOOR	
DL 1.62	2.4	0	2.4	1	2.4	ENTRANCE DOOR	
DL 1.63	2.4	0	2.4	1	2.4	ENTRANCE DOOR	
DL 1.64	2.4	0	2.4	1	2.4	ENTRANCE DOOR	
DL 1.65	2.4	0	2.4	1	2.4	ENTRANCE DOOR	
DL 1.66	2.4	0	2.4	1	2.4	ENTRANCE DOOR	
DL 1.67	2.4	0	2.4	1	2.4	ENTRANCE DOOR	
DL 1.68	2.4	0	2.4	1	2.4	ENTRANCE DOOR	
DL 1.69	2.4	0	2.4	1	2.4	ENTRANCE DOOR	
DL 1.70	2.4	0	2.4	1	2.4	ENTRANCE DOOR	
DL 1.71	2.4	0	2.4	1	2.4	ENTRANCE DOOR	
DL 1.72	2.4	0	2.4	1	2.4	ENTRANCE DOOR	
DL 1.73	2.4	0	2.4	1	2.4	ENTRANCE DOOR	
DL 1.74	2.4	0	2.4	1	2.4	ENTRANCE DOOR	
DL 1.75	2.4	0	2.4	1	2.4	ENTRANCE DOOR	
DL 1.76	2.4	0	2.4	1	2.4	ENTRANCE DOOR	
DL 1.77	2.4	0	2.4	1	2.4	ENTRANCE DOOR	
DL 1.78	2.4	0	2.4	1	2.4	ENTRANCE DOOR	
DL 1.79	2.4	0	2.4	1	2.4	ENTRANCE DOOR	
DL 1.80	2.4	0	2.4	1	2.4	ENTRANCE DOOR	
DL 1.81	2.4	0	2.4	1	2.4	ENTRANCE DOOR	
DL 1.82	2.4	0	2.4	1	2.4	ENTRANCE DOOR	
DL 1.83	2.4	0	2.4	1	2.4	ENTRANCE DOOR	
DL 1.84	2.4	0	2.4	1	2.4	ENTRANCE DOOR	
DL 1.85	2.4	0	2.4	1	2.4	ENTRANCE DOOR	
DL 1.86	2.4	0	2.4	1	2.4	ENTRANCE DOOR	
DL 1.87	2.4	0	2.4	1	2.4	ENTRANCE DOOR	
DL 1.88	2.4	0	2.4	1	2.4	ENTRANCE DOOR	
DL 1.89	2.4	0	2.4	1	2.4	ENTRANCE DOOR	
DL 1.90	2.4	0	2.4	1	2.4	ENTRANCE DOOR	
DL 1.91	2.4	0	2.4	1	2.4	ENTRANCE DOOR	
DL 1.92	2.4	0	2.4	1	2.4	ENTRANCE DOOR	
DL 1.93	2.4	0	2.4	1	2.4	ENTRANCE DOOR	
DL 1.94	2.4	0	2.4	1	2.4	ENTRANCE DOOR	
DL 1.95	2.4	0	2.4	1	2.4	ENTRANCE DOOR	
DL 1.96	2.4	0	2.4	1	2.4	ENTRANCE DOOR	
DL 1.97	2.4	0	2.4	1	2.4	ENTRANCE DOOR	
DL 1.98	2.4	0	2.4	1	2.4	ENTRANCE DOOR	
DL 1.99	2.4	0	2.4	1	2.4	ENTRANCE DOOR	
DL 1.100	2.4	0	2.4	1	2.4	ENTRANCE DOOR	
DL 1.101	2.4	0	2.4	1	2.4	ENTRANCE DOOR	
DL 1.102	2.4	0	2.4	1	2.4	ENTRANCE DOOR	
DL 1.103	2.4	0	2.4	1	2.4	ENTRANCE DOOR	
DL 1.104	2.4	0	2.4	1	2.4	ENTRANCE DOOR	
DL 1.105	2.4	0	2.4	1	2.4	ENTRANCE DOOR	
DL 1.106	2.4	0	2.4	1	2.4	ENTRANCE DOOR	
DL 1.107	2.4	0	2.4	1	2.4	ENTRANCE DOOR	
DL 1.108	2.4	0	2.4	1	2.4	ENTRANCE DOOR	
DL 1.109	2.4	0	2.4	1	2.4	ENTRANCE DOOR	
DL 1.110	2.4	0	2.4	1	2.4	ENTRANCE DOOR	
DL 1.111	2.4	0	2.4	1	2.4	ENTRANCE DOOR	
DL 1.112	2.4	0	2.4	1	2.4	ENTRANCE DOOR	
DL 1.113	2.4	0	2.4	1	2.4	ENTRANCE DOOR	
DL 1.114	2.4	0	2.4	1	2.4	ENTRANCE DOOR	
DL 1.115	2.4	0	2.4	1	2.4	ENTRANCE DOOR	
DL 1.116	2.4	0	2.4	1	2.4	ENTRANCE DOOR	
DL 1.117	2.4	0	2.4	1	2.4	ENTRANCE DOOR	
DL 1.118	2.4	0	2.4	1	2.4	ENTRANCE DOOR	
DL 1.119	2.4	0	2.4	1	2.4	ENTRANCE DOOR	
DL 1.120	2.4	0	2.4	1	2.4	ENTRANCE DOOR	
DL 1.121	2.4	0	2.4	1	2.4	ENTRANCE DOOR	
DL 1.122	2.4	0	2.4	1	2.4	ENTRANCE DOOR	
DL 1.123	2.4	0	2.4	1	2.4	ENTRANCE DOOR	
DL 1.124	2.4	0	2.4	1	2.4	ENTRANCE DOOR	
DL 1.125	2.4	0	2.4	1	2.4	ENTRANCE DOOR	
DL 1.126	2.4	0	2.4	1	2.4	ENTRANCE DOOR	
DL 1.127	2.4	0	2.4	1	2.4	ENTRANCE DOOR	
DL 1.128	2.4	0	2.4	1	2.4	ENTRANCE DOOR	
DL 1.129	2.4	0	2.4	1	2.4	ENTRANCE DOOR	
DL 1.130	2.4	0	2.4	1	2.4	ENTRANCE DOOR	
DL 1.131	2.4	0	2.4	1	2.4	ENTRANCE DOOR	
DL 1.132	2.4	0	2.4	1	2.4	ENTRANCE DOOR	
DL 1.133	2.4	0	2.4	1	2.4	ENTRANCE DOOR	
DL 1.134	2.4	0	2.4	1	2.4	ENTRANCE DOOR	
DL 1.135	2.4	0	2.4	1	2.4	ENTRANCE DOOR	
DL 1.136	2.4	0	2.4	1	2.4	ENTRANCE DOOR	
DL 1.137	2.4	0	2.4	1	2.4	ENTRANCE DOOR	
DL 1.138	2.4	0	2.4	1	2.4	ENTRANCE DOOR	
DL 1.139	2.4	0	2.4	1	2.4	ENTRANCE DOOR	
DL 1.140	2.4	0	2.4	1	2.4	ENTRANCE DOOR	
DL 1.141	2.4	0	2.4	1	2.4	ENTRANCE DOOR	
DL 1.142	2.4	0	2.4	1	2.4	ENTRANCE DOOR	
DL 1.143	2.4	0	2.4	1	2.4	ENTRANCE DOOR	
DL 1.144	2.4	0	2.4	1	2.4	ENTRANCE DOOR	
DL 1.145	2.4	0	2.4	1	2.4	ENTRANCE DOOR	
DL 1.146	2.4	0	2.4	1	2.4	ENTRANCE DOOR	
DL 1.147	2.4	0	2.4	1	2.4	ENTRANCE DOOR	
DL 1.148	2.4	0	2.4	1	2.4	ENTRANCE DOOR	
DL 1.149	2.4	0	2.4	1	2.4	ENTRANCE DOOR	
DL 1.150	2.4	0	2.4	1	2.4	ENTRANCE DOOR	
DL 1.151	2.4	0	2.4	1	2.4	ENTRANCE DOOR	
DL 1.152	2.4	0	2.4	1	2.4	ENTRANCE DOOR	
DL 1.153	2.4	0	2.4	1	2.4	ENTRANCE DOOR	
DL 1.154	2.4	0	2.4	1	2.4	ENTRANCE DOOR	
DL 1.155	2.4	0	2.4	1	2.4	ENTRANCE DOOR	
DL 1.156	2.4	0	2.4	1	2.4	ENTRANCE DOOR	
DL 1.157	2.4	0	2.4	1	2.4	ENTRANCE DOOR	
DL 1.158	2.4	0	2.4	1	2.4	ENTRANCE DOOR	
DL 1.159	2.4	0	2.4	1	2.4	ENTRANCE DOOR	
DL 1.160	2.4	0	2.4	1	2.4	ENTRANCE DOOR	
DL 1.161	2.4	0	2.4	1	2.4	ENTRANCE DOOR	
DL 1.162	2.4	0	2.4	1	2.4	ENTRANCE DOOR	
DL 1.163	2.4	0	2.4	1	2.4	ENTRANCE DOOR	
DL 1.164	2.4	0	2.4	1	2.4	ENTRANCE DOOR	
DL 1.165	2.4	0	2.4	1	2.4	ENTRANCE DOOR	
DL 1.166	2.4	0	2.4	1	2.4	ENTRANCE DOOR	
DL 1.167	2.4	0	2.4	1	2.4	ENTRANCE DOOR	
DL 1.168	2.4	0	2.4	1	2.4	ENTRANCE DOOR	
DL 1.169	2.4	0	2.4	1	2.4	ENTRANCE DOOR	
DL 1.170	2.4	0	2.4	1	2.4	ENTRANCE DOOR	
DL 1.171	2.4	0	2.4	1	2.4	ENTRANCE DOOR	
DL 1.172	2.4	0	2.4	1	2.4	ENTRANCE DOOR	
DL 1.173	2.4	0	2.4	1	2.4	ENTRANCE DOOR	
DL 1.174	2.4	0	2.4	1			