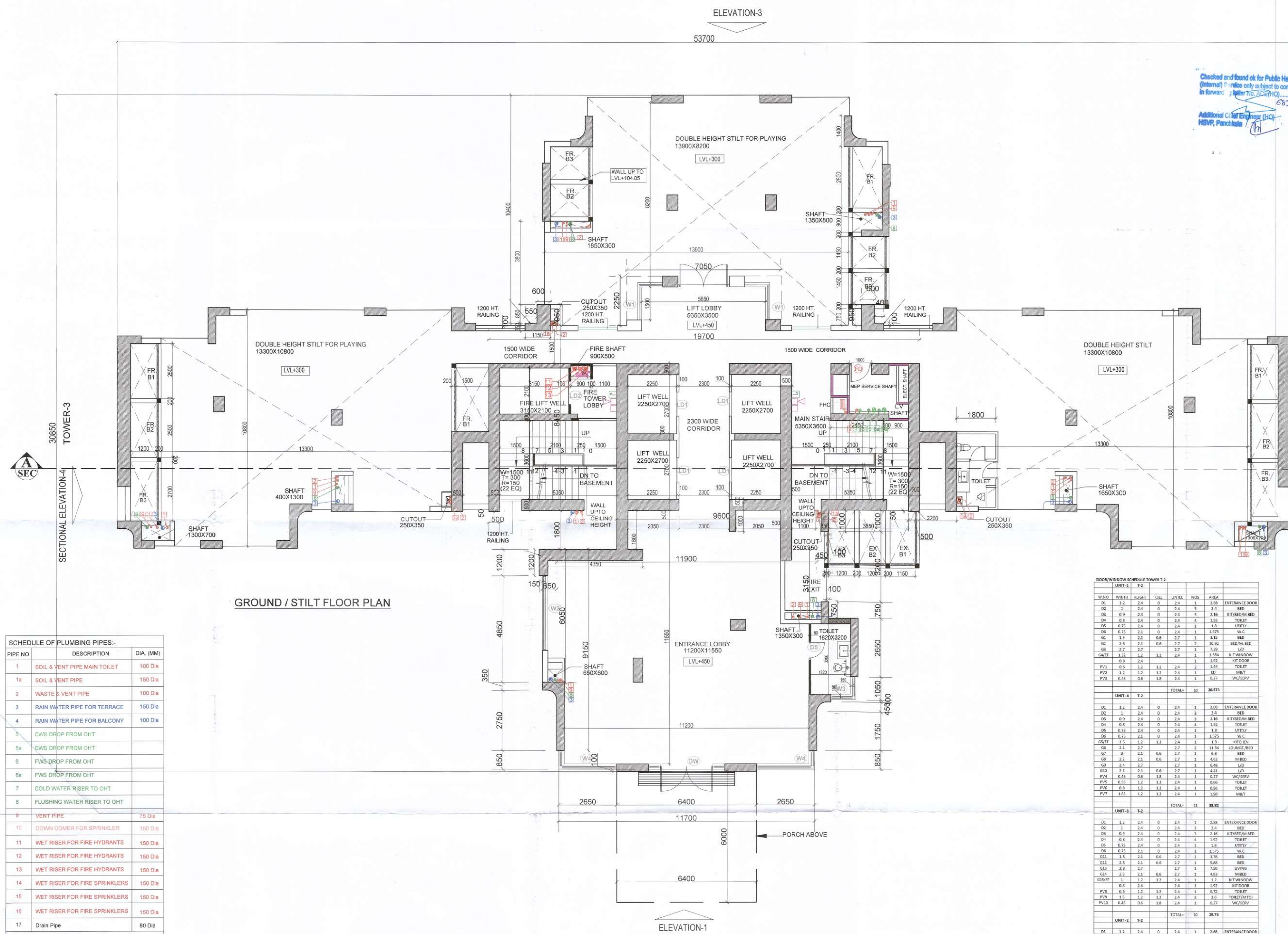


Checked and found ok for Public Health (Internal) Service only subject to comments in in forward: [Signature]
 Additional Civil Engineer (HQ) MSVP, Panchajanya [Signature]
 This is a "PROVISIONAL BUILDING PLAN" approved only for the purpose of inviting objections from the general public.
 [Signatures: Member Secretary BPAC, Chairman BPAC]

Ram Avtar Bassi AD(HQ)
 P.A. A.T.P.



SCHEDULE OF PLUMBING PIPES:-

PIPE NO.	DESCRIPTION	DIA. (MM)
1	SOIL & VENT PIPE MAIN TOILET	100 Dia
1a	SOIL & VENT PIPE	150 Dia
2	WASTE & VENT PIPE	100 Dia
3	RAIN WATER PIPE FOR TERRACE	150 Dia
4	RAIN WATER PIPE FOR BALCONY	100 Dia
5	CWS DROP FROM OHT	
5a	CWS DROP FROM OHT	
6	FWS DROP FROM OHT	
6a	FWS DROP FROM OHT	
7	COLD WATER RISER TO OHT	
8	FLUSHING WATER RISER TO OHT	
9	VENT PIPE	75 Dia
10	DOWN COMER FOR SPRINKLER	150 Dia
11	WET RISER FOR FIRE HYDRANTS	150 Dia
12	WET RISER FOR FIRE HYDRANTS	150 Dia
13	WET RISER FOR FIRE HYDRANTS	150 Dia
14	WET RISER FOR FIRE SPRINKLERS	150 Dia
15	WET RISER FOR FIRE SPRINKLERS	150 Dia
16	WET RISER FOR FIRE SPRINKLERS	150 Dia
17	Drain Pipe	80 Dia

LEGEND FIRE FIGHTING:-

[Symbol]	FIRE HOSE CABINET
[Symbol]	FIREMAN'S JACK
[Symbol]	HOOTER
[Symbol]	MANUAL CALL POINT

LEGEND FIRE EXTINGUISHER

[Symbol]	FIRE EXTINGUISHER ABC POWDER TYPE - CAP. 6KG.
[Symbol]	FIRE EXTINGUISHER BC POWDER TYPE - CAP. 9KG.

NOTE: TOWERS SHALL BE PROVIDED WITH AUTOMATIC SPRINKLERS

DOOR/WINDOW SCHEDULE TOWER T-2

UNIT	W.D.	WIDTH	HEIGHT	CALL	LINTEL	NOS.	AREA	ENTRANCE DOOR	
D1	1.2	2.4	0	2.4	1	2.88		ENTRANCE DOOR	
D2	1	2.4	0	2.4	3	2.4		BED	
D3	0.9	2.4	0	2.4	3	2.16		KIT/BED/M.BED	
D4	0.8	2.4	0	2.4	4	1.92		TOILET	
D5	0.75	2.4	0	2.4	1	1.8		UTILITY	
D6	0.75	2.1	0	2.1	1	1.575		W.C.	
D7	1.5	2.1	0.6	2.7	1	3.15		BED	
D8	2.6	2.1	0.6	2.7	2	10.92		BED/M.BED	
D9	2.7	2.7	0	2.7	1	7.29		L/D	
GV/EF	1.2	1.2	1.2	2.4	1	1.584		KIT WINDOW	
GV/EF	0.8	2.4	0	2.4	1	1.92		KIT DOOR	
PV1	0.6	1.2	1.2	2.4	1	1.44		TOILET	
PV2	1.2	1.2	1.2	2.4	1	0.72		M.B/T	
PV3	0.45	0.6	1.8	2.4	1	0.27		WC/SERV	
TOTAL=								30	36.574

UNIT - 4 T-2

UNIT	W.D.	WIDTH	HEIGHT	CALL	LINTEL	NOS.	AREA	ENTRANCE DOOR	
D1	1.2	2.4	0	2.4	1	2.88		ENTRANCE DOOR	
D2	1	2.4	0	2.4	3	2.4		BED	
D3	0.9	2.4	0	2.4	3	2.16		KIT/BED/M.BED	
D4	0.8	2.4	0	2.4	4	1.92		TOILET	
D5	0.75	2.4	0	2.4	1	1.8		UTILITY	
D6	0.75	2.1	0	2.1	1	1.575		W.C.	
D7	1.5	2.1	0.6	2.7	1	3.15		BED	
D8	2.6	2.1	0.6	2.7	2	10.92		BED/M.BED	
D9	2.7	2.7	0	2.7	1	7.29		L/D	
GV/EF	1.2	1.2	1.2	2.4	1	1.584		KIT WINDOW	
GV/EF	0.8	2.4	0	2.4	1	1.92		KIT DOOR	
PV1	0.6	1.2	1.2	2.4	1	1.44		TOILET	
PV2	1.2	1.2	1.2	2.4	1	0.72		M.B/T	
PV3	0.45	0.6	1.8	2.4	1	0.27		WC/SERV	
TOTAL=								11	38.82

UNIT - 3 T-2

UNIT	W.D.	WIDTH	HEIGHT	CALL	LINTEL	NOS.	AREA	ENTRANCE DOOR	
D1	1.2	2.4	0	2.4	1	2.88		ENTRANCE DOOR	
D2	1	2.4	0	2.4	3	2.4		BED	
D3	0.9	2.4	0	2.4	3	2.16		KIT/BED/M.BED	
D4	0.8	2.4	0	2.4	4	1.92		TOILET	
D5	0.75	2.4	0	2.4	1	1.8		UTILITY	
D6	0.75	2.1	0	2.1	1	1.575		W.C.	
D7	1.5	2.1	0.6	2.7	1	3.15		BED	
D8	2.6	2.1	0.6	2.7	2	10.92		BED/M.BED	
D9	2.7	2.7	0	2.7	1	7.29		L/D	
GV/EF	1.2	1.2	1.2	2.4	1	1.584		KIT WINDOW	
GV/EF	0.8	2.4	0	2.4	1	1.92		KIT DOOR	
PV1	0.6	1.2	1.2	2.4	1	1.44		TOILET	
PV2	1.2	1.2	1.2	2.4	1	0.72		M.B/T	
PV3	0.45	0.6	1.8	2.4	1	0.27		WC/SERV	
TOTAL=								30	29.76

UNIT - 2 T-2

UNIT	W.D.	WIDTH	HEIGHT	CALL	LINTEL	NOS.	AREA	ENTRANCE DOOR	
D1	1.2	2.4	0	2.4	1	2.88		ENTRANCE DOOR	
D2	1	2.4	0	2.4	3	2.4		BED	
D3	0.9	2.4	0	2.4	3	2.16		KIT/BED/M.BED	
D4	0.8	2.4	0	2.4	4	1.92		TOILET	
D5	0.75	2.4	0	2.4	1	1.8		UTILITY	
D6	0.75	2.1	0	2.1	1	1.575		W.C.	
D7	1.5	2.1	0.6	2.7	1	3.15		BED	
D8	2.6	2.1	0.6	2.7	2	10.92		BED/M.BED	
D9	2.7	2.7	0	2.7	1	7.29		L/D	
GV/EF	1.2	1.2	1.2	2.4	1	1.584		KIT WINDOW	
GV/EF	0.8	2.4	0	2.4	1	1.92		KIT DOOR	
PV1	0.6	1.2	1.2	2.4	1	1.44		TOILET	
PV2	1.2	1.2	1.2	2.4	1	0.72		M.B/T	
PV3	0.45	0.6	1.8	2.4	1	0.27		WC/SERV	
TOTAL=								11	33.43

COMMON AREA T-2

UNIT	W.D.	WIDTH	HEIGHT	CALL	LINTEL	NOS.	AREA	ENTRANCE DOOR	
D7	1	2.1	0	2	1	2.1		SERVICES	
D8	1.1	2.1	0	2	1	2.31		MAIN/FIRE STAIRS	
D9	1.1	2.1	0	2	1	2.31		FIRE LOBBY	
D10	1	2.75	0	2	5.5	2.75		MAIN/FIRE STAIRS	
D11	1.5	1.5	1.2	2.7	1	2.25		CORRIDOR	
D12	1.4	1.5	1.2	2.7	1	2.1		CORRIDOR	
TOTAL=								7	36.57

GROUND/UPPER DUPLEX T-2

W. NO.	WIDTH	HEIGHT	CALL	LINTEL	N. NOS.	ENTRANCE LOBBY	
W4	2.65+0.85	5.4	0.1	5.5	2	ENTRANCE LOBBY	
DW	0.5+2+0.5	5.4	0.1	5.5	1	ENTRANCE LOBBY	
W2	3.4	5.4	0.1	5.5	1	ENTRANCE LOBBY	
W1	1.15+1.7	3.9	0.1	4	2	LIFT LOBBY	
W3	1.15	1.05	0.1	4	1	LIFT LOBBY	
TOTAL=							7

NOTE: D1 (UNIT ENTRY DOOR IS 1HR FIRE RATED)

PROJECT TITLE
 REVISED BUILDING PLANS OF MIXED LAND USE UNDER TOD SCHEME FOR AREA MEASURING 19.244 ACRES (LICENCE NO. 168-172 OF 2004, DATED 16/12/2004 & LICENCE NO. 545-546 OF 2006, DATED 13/03/2006) IN SECTOR- 53, GURUGRAM MANESAR URBAN COMPLEX BEING DEVELOPED BY M/S VIPUL LIMITED AND OTHERS.

SCALE: 1:100
DATE: AUG. 2021
DEALT: J.P. SHARMA **CHECKED:** VG

ARCHITECT Design Axis architects
 T-134 A, AM BACH FARM HOUSE, NEAR SHAMSHI TALAB ANDHERIA MORH, MEHRAULI, NEW DELHI - 110030
 PH - 9811058563, 26644831, 26648146
 EMAIL - designaxis2015@gmail.com

ARCHITECT'S ID designcosmos
 Architects & Interior Design Consultants
 Second Floor, A-609, Sushant Lok-I, Gurgaon.
 Email : studio.designcosmos@gmail.com
 Contact : 0124-4203676

ARCHITECT'S SIGN.
 [Signature: Design Axis Architects & Engineers, New Delhi]

APPLICANT'S SIGN.
 For VIPUL LIMITED
 [Signature: Authorised Signatory]