

This is a "PROVISIONAL BUILDING PLAN" approved only for the purpose of inviting objections from the general public.

Checked and found ok for Public Health (Internal) Services on subject to comments in DEP(HQ).....DL.....14/1/21
Additional Check for HSNP, Panchkula

STPHQ
Member Secretary
BPAIC

STPHQ
Member Secretary
BPAIC

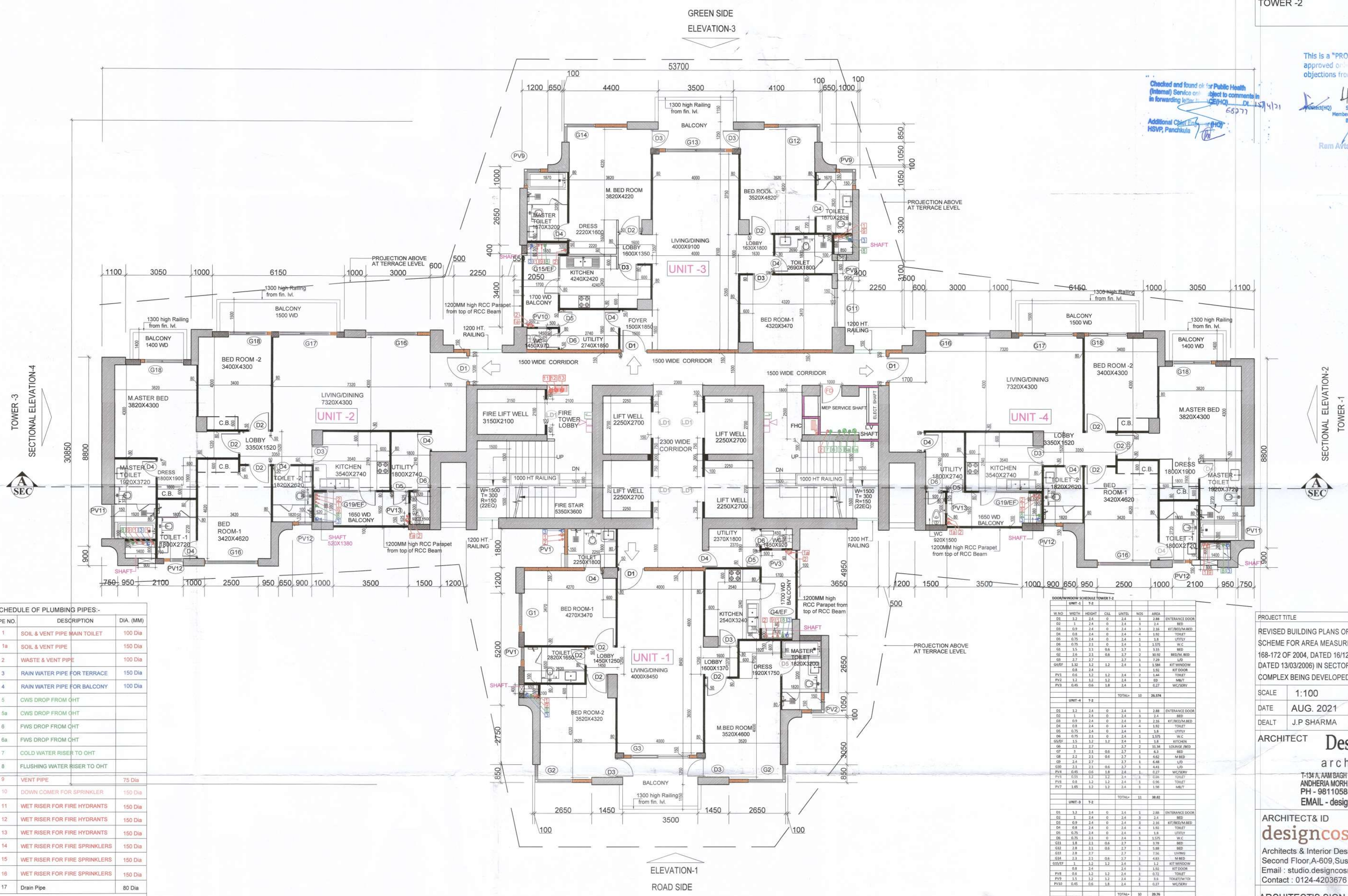
STPHQ
Member Secretary
BPAIC

STPHQ
Member Secretary
BPAIC

Ram Avtar Basi
AD(HQ)

P.A.
A.T.P.

DDT(HQ)
Member Secretary
BPAIC



SCHEDULE OF PLUMBING PIPES:-

PIPE NO.	DESCRIPTION	DIA. (MM)
1	SOIL & VENT PIPE MAIN TOILET	100 Dia
1a	SOIL & VENT PIPE	150 Dia
2	WASTE & VENT PIPE	100 Dia
3	RAIN WATER PIPE FOR TERRACE	150 Dia
4	RAIN WATER PIPE FOR BALCONY	100 Dia
5	CWS DROP FROM QHT	
5a	CWS DROP FROM QHT	
6	FWS DROP FROM QHT	
6a	FWS DROP FROM QHT	
7	COLD WATER RISER TO QHT	
8	FLUSHING WATER RISER TO QHT	
9	VENT PIPE	75 Dia
10	DOWN COMER FOR SPRINKLER	150 Dia
11	WET RISER FOR FIRE HYDRANTS	150 Dia
12	WET RISER FOR FIRE HYDRANTS	150 Dia
13	WET RISER FOR FIRE HYDRANTS	150 Dia
14	WET RISER FOR FIRE SPRINKLERS	150 Dia
15	WET RISER FOR FIRE SPRINKLERS	150 Dia
16	WET RISER FOR FIRE SPRINKLERS	150 Dia
17	Drain Pipe	80 Dia

LEGEND FIRE FIGHTING:-

[Symbol]	FIRE HOSE CABINET
[Symbol]	FIREMAN'S JACK
[Symbol]	HOOTER
[Symbol]	MANUAL CALL POINT

LEGEND FIRE EXTINGUISHER

[Symbol]	FIRE EXTINGUISHER ABC POWDER TYPE - CAP. 6KG.
[Symbol]	FIRE EXTINGUISHER BC POWDER TYPE -CAP. 9KG.

NOTE
TOWERS SHALL BE PROVIDED WITH AUTOMATIC SPRINKLERS

DOOR WINDOW SCHEDULE TOWER-2

UNIT	W.D.	W	H	C	L	N	A	AREA	REMARKS
UNIT-1	D01	3.2	2.4	0	2.4	1	2.88	ENTRANCE DOOR	
	D02	2.1	2.4	0	2.4	3	2.4	BED	
	D03	0.9	2.4	0	2.4	3	2.16	KIT/BEDRM/MBD	
	D04	0.8	2.4	0	2.4	4	1.92	TOILET	
	D05	0.75	2.4	0	2.4	1	1.8	LITR/TV	
	D06	0.75	2.4	0	2.4	1	1.8	W.C.	
	D07	1.5	2.1	0.6	2.7	1	3.15	MBD	
	D08	2.1	2.1	0.6	2.7	1	4.41	MBD	
	D09	2.4	2.7	0.6	2.7	1	6.48	L/D	
	D10	2.1	2.1	0.6	2.7	1	4.41	L/D	
UNIT-2	D11	3.2	2.4	0	2.4	1	2.88	ENTRANCE DOOR	
	D12	2.1	2.4	0	2.4	3	2.4	BED	
	D13	0.9	2.4	0	2.4	3	2.16	KIT/BEDRM/MBD	
	D14	0.8	2.4	0	2.4	4	1.92	TOILET	
	D15	0.75	2.4	0	2.4	1	1.8	LITR/TV	
	D16	0.75	2.4	0	2.4	1	1.8	W.C.	
	D17	1.5	2.1	0.6	2.7	1	3.15	MBD	
	D18	2.1	2.1	0.6	2.7	1	4.41	MBD	
	D19	2.4	2.7	0.6	2.7	1	6.48	L/D	
	D20	2.1	2.1	0.6	2.7	1	4.41	L/D	
UNIT-3	D21	3.2	2.4	0	2.4	1	2.88	ENTRANCE DOOR	
	D22	2.1	2.4	0	2.4	3	2.4	BED	
	D23	0.9	2.4	0	2.4	3	2.16	KIT/BEDRM/MBD	
	D24	0.8	2.4	0	2.4	4	1.92	TOILET	
	D25	0.75	2.4	0	2.4	1	1.8	LITR/TV	
	D26	0.75	2.4	0	2.4	1	1.8	W.C.	
	D27	1.5	2.1	0.6	2.7	1	3.15	MBD	
	D28	2.1	2.1	0.6	2.7	1	4.41	MBD	
	D29	2.4	2.7	0.6	2.7	1	6.48	L/D	
	D30	2.1	2.1	0.6	2.7	1	4.41	L/D	
UNIT-4	D31	3.2	2.4	0	2.4	1	2.88	ENTRANCE DOOR	
	D32	2.1	2.4	0	2.4	3	2.4	BED	
	D33	0.9	2.4	0	2.4	3	2.16	KIT/BEDRM/MBD	
	D34	0.8	2.4	0	2.4	4	1.92	TOILET	
	D35	0.75	2.4	0	2.4	1	1.8	LITR/TV	
	D36	0.75	2.4	0	2.4	1	1.8	W.C.	
	D37	1.5	2.1	0.6	2.7	1	3.15	MBD	
	D38	2.1	2.1	0.6	2.7	1	4.41	MBD	
	D39	2.4	2.7	0.6	2.7	1	6.48	L/D	
	D40	2.1	2.1	0.6	2.7	1	4.41	L/D	
UNIT-5	D41	3.2	2.4	0	2.4	1	2.88	ENTRANCE DOOR	
	D42	2.1	2.4	0	2.4	3	2.4	BED	
	D43	0.9	2.4	0	2.4	3	2.16	KIT/BEDRM/MBD	
	D44	0.8	2.4	0	2.4	4	1.92	TOILET	
	D45	0.75	2.4	0	2.4	1	1.8	LITR/TV	
	D46	0.75	2.4	0	2.4	1	1.8	W.C.	
	D47	1.5	2.1	0.6	2.7	1	3.15	MBD	
	D48	2.1	2.1	0.6	2.7	1	4.41	MBD	
	D49	2.4	2.7	0.6	2.7	1	6.48	L/D	
	D50	2.1	2.1	0.6	2.7	1	4.41	L/D	
COMMON AREA	G01	1.1	2.1	0	2	1	2.31	SERVICES	
	G02	1.1	2.1	0	2	1	2.31	MARKETING STAFFS	
	G03	1.1	2.1	0	2	1	2.31	FIRE LOBBY	
	G04	2.2	2.2	0	2.2	1	4.84	MARKETING STAFFS	
	G05	1.1	1.5	1.2	2.7	1	2.35	CORRIDOR	
	G06	1.1	1.5	1.2	2.7	1	2.35	CORRIDOR	
	G07	1.1	1.5	1.2	2.7	1	2.35	CORRIDOR	
	G08	1.1	1.5	1.2	2.7	1	2.35	CORRIDOR	
	G09	1.1	1.5	1.2	2.7	1	2.35	CORRIDOR	
	G10	1.1	1.5	1.2	2.7	1	2.35	CORRIDOR	

NOTE: D1 (UNIT ENTRY DOOR IS 1HR FIRE RATED)

PROJECT TITLE
REVISED BUILDING PLANS OF MIXED LAND USE UNDER TOD SCHEME FOR AREA MEASURING 19.244 ACRES (LICENCE NO. 168-172 OF 2004, DATED 16/12/2004 & LICENCE NO. 545-546 OF 2006, DATED 13/03/2006) IN SECTOR- 53, GURUGRAM MANESAR URBAN COMPLEX BEING DEVELOPED BY M/S VIPUL LIMITED AND OTHERS.

SCALE 1:100
DATE AUG. 2021
DEALT J.P SHARMA CHECKED VG

ARCHITECT **Design Axis architects**
T-134 A, AM BAGH FARM HOUSE, NEAR SHAMSHI TALAB ANDHERIA MORH, MEHRAULI, NEW DELHI - 110030
PH - 9811058563, 26644831, 26648146
EMAIL - designaxis2015@gmail.com

ARCHITECT'S ID **designcosmos**
Architects & Interior Design Consultants
Second Floor, A-609, Sushant Lok-I, Gurgaon.
Email : studio.designcosmos@gmail.com
Contact : 0124-4203676

ARCHITECT'S SIGN.
DESIGN AXIS ARCHITECTS ENGINEERS NEW DELHI

APPLICANT'S SIGN.
VIPUL LIMITED
Authorised Signatory