



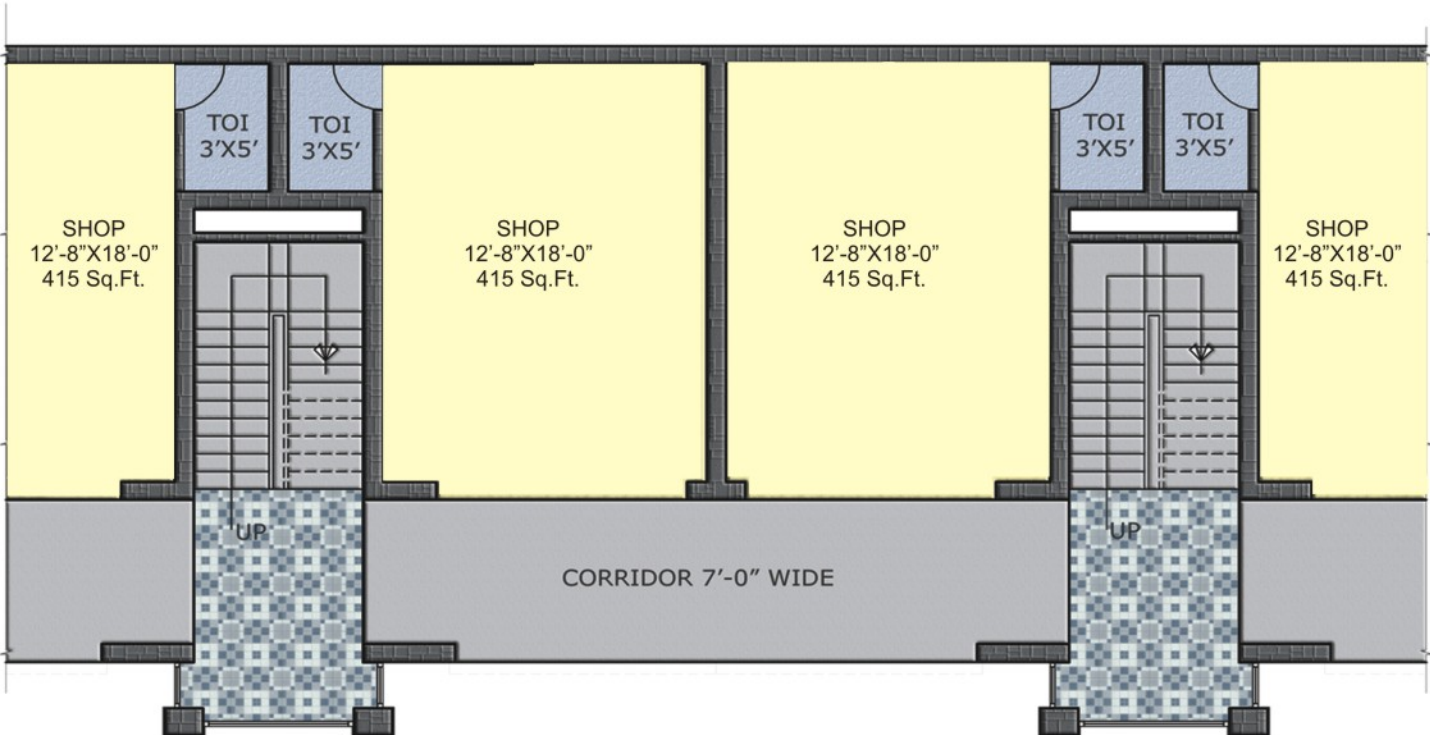
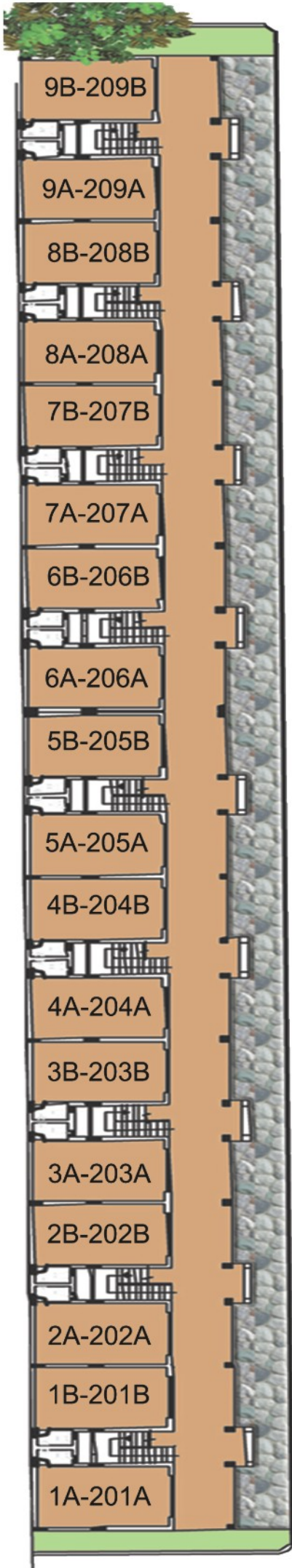
Vipul
Arcade



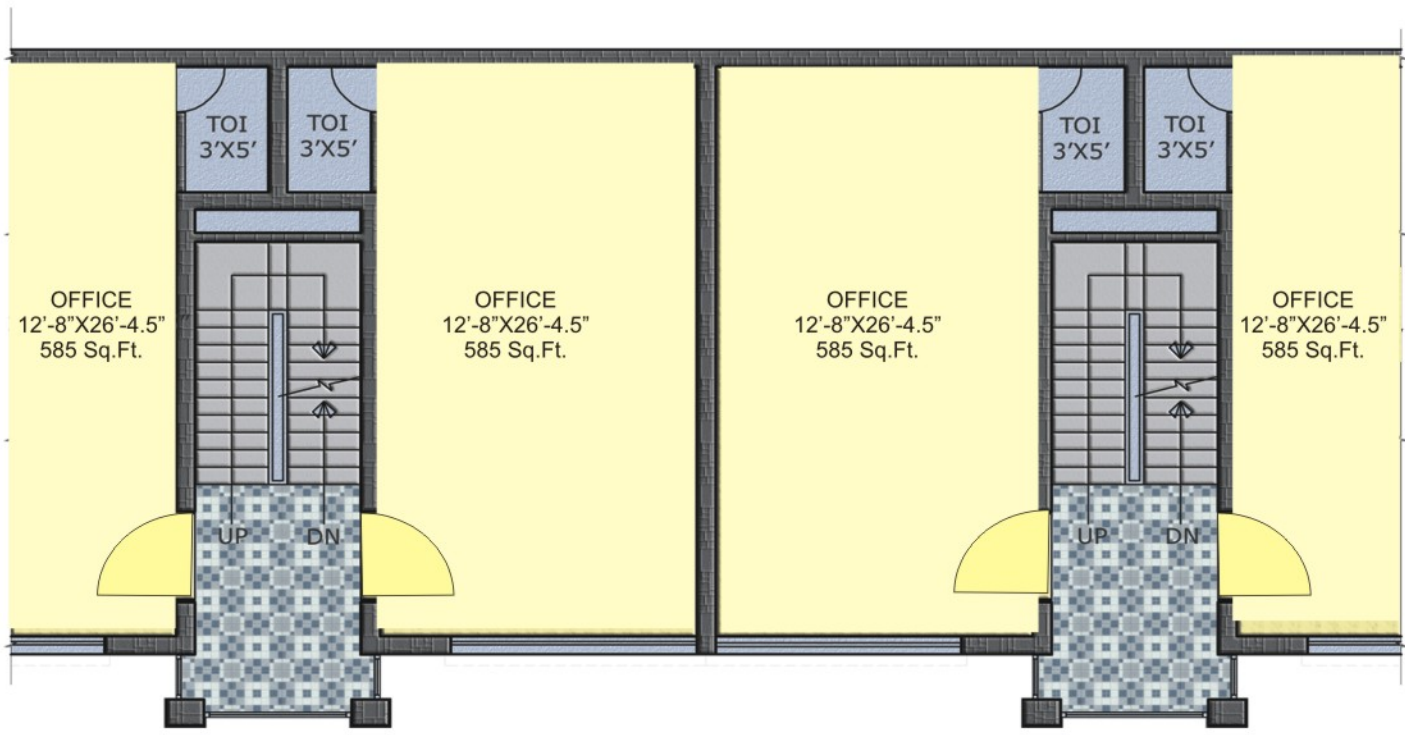


Location Plan (Vipul World)

Detail Layout



TYPICAL GROUND FLOOR PLAN



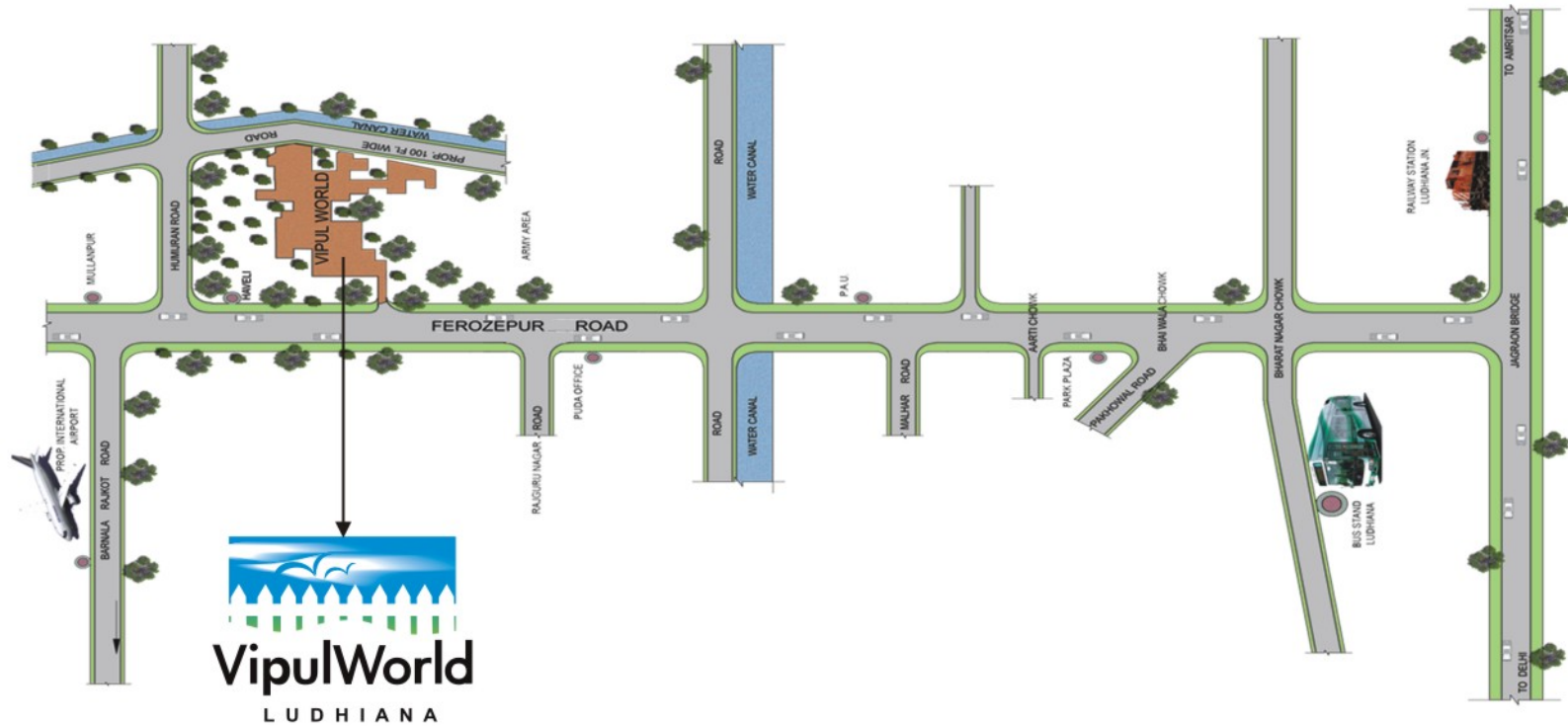
TYPICAL FIRST & SECOND FLOOR PLAN

SPECIFICATIONS

- | | |
|-------------------|---------------------------------------|
| 1. Common Areas | Finished in Stone & Tiles |
| 2. Main Ent. Door | Flush Doors |
| 3. Floor | Ceramic Tiles |
| 4. Walls | Plastered & Painted |
| 5. Toilet Floor | Ceramic Tiles |
| 6. Toilet Dado | 3 Ft High Ceramic Tiles |
| 7. Fixtures | White Sanitary Fixtures & CP Fittings |
| 8. Windows | Powder Coated Aluminium |

Provision for Installing A.C. Units

Location



Vipul Agora



Vipul Plaza



Vipul Square



Vipul TechSquare



Vipul Plaza



Vipul Business Park



Vipul

Building Happiness

Ludhiana Office

Vipul World, Village Bhanohar, P.O. Dakha, Ferozepur Road, Ludhiana-141 102. Tel: +91 161 6546198

Corporate Office

Vipul Limited, Vipul TechSquare, Golf Course Road, Sector 43, Gurgaon-122 009, Tel: +91 124 4065500
www.vipulgroup.in

Disclaimer: Areas are on super built-up basis. Super Built-up includes walls and proportionate area of staircase, common passages and common facilities etc.
 The Specifications / images / information contained herein are subject to change as may be required by the authorities / developers and can not form part of any contract / offer



Building Happiness